



PUBLIC WORKS COMMUNITY FORUM

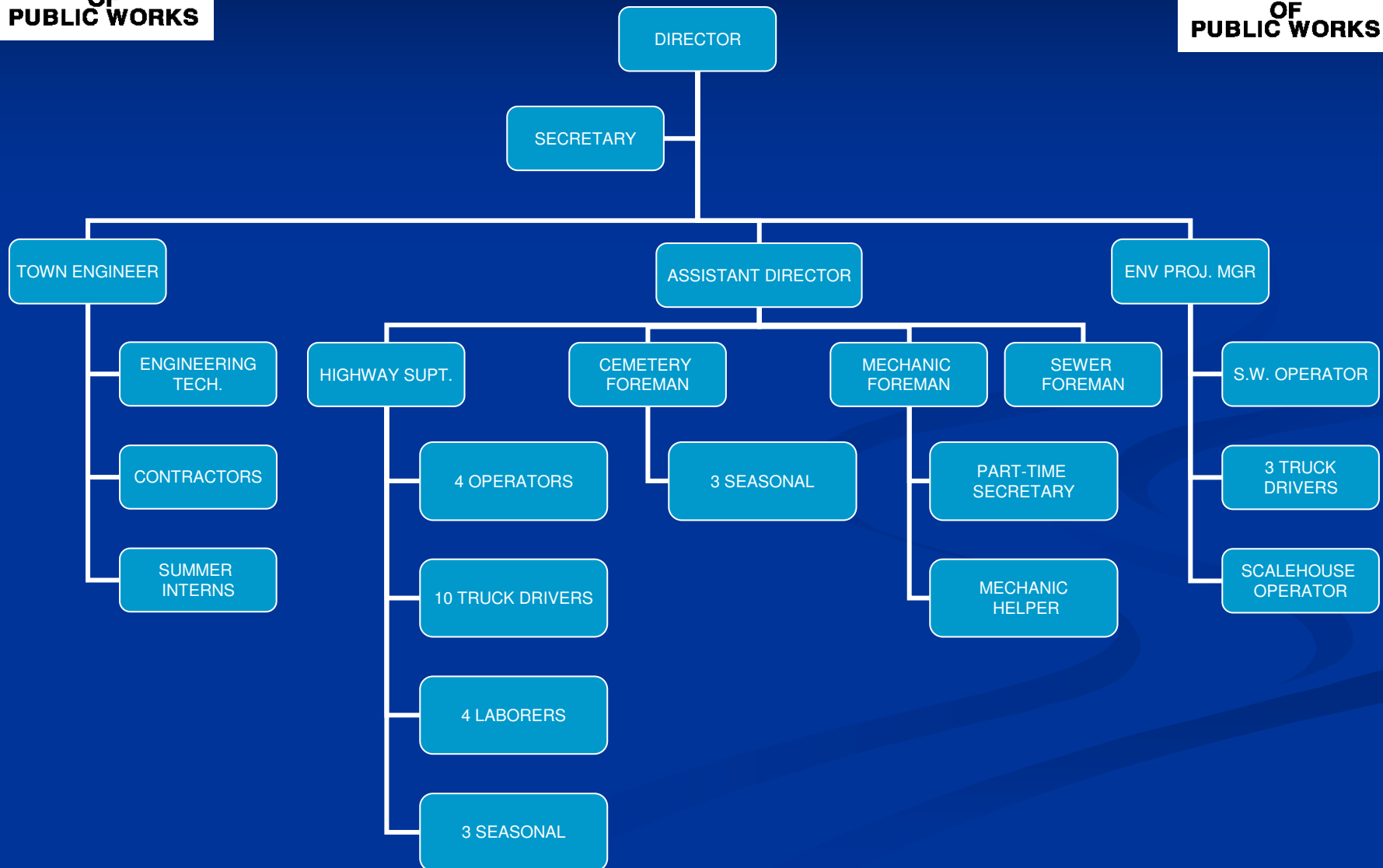
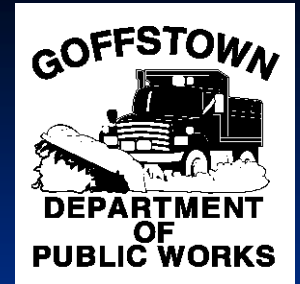
Director, Carl Quiram, P.E.

September 18th, 2007

September 26th, 2007



DPW Team



DPW Responsibilities



Maintenance Division

- Road Maintenance
- Fleet maintenance
- Drainage System
- Sewer System
- Cemeteries
- Plowing

Engineering Division

- In-house Design
- Street Opening & Driveway Permits
- Planning Board Reviews
- Construction Admin. & Inspection
- Utilities Mapping



DPW Responsibilities

Environmental Division

- Safety Officer
- Solid Waste Hauling
- Transfer Station Operations
- Drinking Well Contamination
- Phase II Stormwater Compliance
- Landfill Maintenance & Monitoring
- Household Haz. Waste Program & Compliance
- Curbside Collection & Single Stream Recycling Program



Typical Design-Build Process

- Develop Draft Plans
- Neighborhood Info Meeting
- Easements
- Finalize Design
- Wetlands & Site Specific Permits
- Coordinate Grant Funding
- Plan Review by entities involved & utility companies
- Utility Relocation
- Final Plans & Specifications
- Bidding Process**
- Approval – Selectman, other entities



Typical Design-Build Process

- Contract Documents**
- Pre-construction Conference**
- Start Construction
- Daily Inspections
- Contract Administration**
 - Invoices, Design Changes, Change Orders
- Substantial Completion – Base course pavement
- Final Punchlist
- As-Built Plans



“Not Your Average Design-Build Process” – Roundabout & Bridges

- Preliminary Design
 - *Road Program Funding Approved Town Mtg 2005*
- Public Mtgs
 - *2 Selectman Mtgs., 2 Neighborhood Info Mtgs.*
- Easements
 - *Six needed for project*
- Final Design
 - *Combined HBR Bridge work w/ Mountain Road and Pollard Rd. Bridges*
- Wetlands & Site Specific Permits
 - *Invasive plant species – Significant research on treatment and coordination with Pesticide Control Division*
 - *Historic Issues – NHDR required special report to be complied due to historic nature of bridge*



“Not Your Average Design-Build Process” – Roundabout & Bridges

- Delayed Start of Project until 2006 due to:

- *October 2005 Flood*
- *Invasive Plant Issues at HBR*
- *NHDOT and FEMA review needed of all five bridges*



- *Additional Wetlands Permits and 10 more easements needed for Mtn Rd. and Pollard Rd. Bridges*
- *Construction Documents needed for Bridge portion*

“Not Your Average Design-Build Process” – Roundabout & Bridges

■ DPW Construction Schedule

- *May 2006 Floods - Delayed start until late Sept. 2006*
- *Coordinate pole relocations along Center Street*
- *Installed improved outfall, drainage pipe and structures at roundabout.*
- *Significant re-grading required on HBR to accommodate approaches to roundabout.*
- *High traffic volumes slowed down progress – Over 10,000 veh/day*



“Not Your Average Design-Build Process” – Roundabout & Bridges



■ DPW Construction Schedule

- *October 2006 was a particularly rainy month which hampered progress.*
- *Coordinate with Continental Paving for reclamation of road and paving.*
- *Base course pavement installed in less than 3 months (Nov. 2006)*
- *Curbing sub-contractor left for the winter – Temp. bit. curbing needed*
- *After last snow storm in April 2007, 3rd Flood in 18 months - Delayed DPW construction until the week of June 10th.*

“Not Your Average Design-Build Process” – Roundabout & Bridges

■ DPW Construction Schedule

- *DPW continued w/ drainage installation.*
- *Re-graded high points on Center St. to improve sight distance.*
- *Curbing sub-contractor's schedule often determined when DPW could continue progress.*



- *Cobblestone and curbing installed in sections to allow high traffic volumes through on daily basis.*
- *Last pole near roundabout recently removed – DPW able to install last cobblestone apron. Took approx. 16 months to get all the poles moved.*

“Not Your Average Design-Build Process” – Roundabout & Bridges

■ DPW Construction Schedule

- *Continuing to install concrete and bit sidewalks within project area.*
- *Catch basin covers raised to grade in anticipation of top course pavement.*
- *Top course pavement anticipated before end of month.*



“Not Your Average Design-Build Process” – Roundabout & Bridges

Bidding Process for Bridge Projects

- *Issue Arose during bidding - Additional pole relocations needed at all bridges due to installation of bridge sections with crane.*
- *Bid awarded to John Neville Excavating*
- *NHDOT and Selectman approved bid results. FEMA denied bid results. Had to re-bid Pollard Rd. separately for FEMA. Got FEMA approval of 2nd bid results on Pollard Rd. on September 17, 2007.*

■ Utility Relocations

- *Emergency Letters sent to Verizon and PSNH about poles needing to be moved at bridges.*



“Not Your Average Design-Build Process” – Roundabout & Bridges

■ HBR Bridge Construction

- *Bridge shop drawings previously reviewed and structure ordered so only item holding up construction was pole relocation.*



- *Once pole was removed JEN was on-site within 2 weeks.*
- *Shut down bridge for 2 weeks to allow for proper bridge removal and installation. HBR reopened on schedule - Friday, Sept. 14th, 2007.*

“Not Your Average Design-Build Process” – Roundabout & Bridges

- Mtn. Rd and Pollard Rd. Bridges
 - *Awaiting bridge shop drawings for review.*
 - *Remainder of poles and wires to be moved.*
 - *JNE will start on drainage installation by end of month and continue work on Mountain Rd until the ground freezes.*



- *Received FEMA approval this week on Pollard Road bid results. After shop drawings are approved, structure will be manufactured, and then construction can start.*



Lessons Learned



- Pay the premium to get it done!?
 - Continue to use new methods to notify public of construction.
 - Make sure utility companies review plans and visit site with Town to ensure all conflicts are thought of ahead of time.
-
- Stay on top of utility relocation progress since this can significantly hold up construction work.

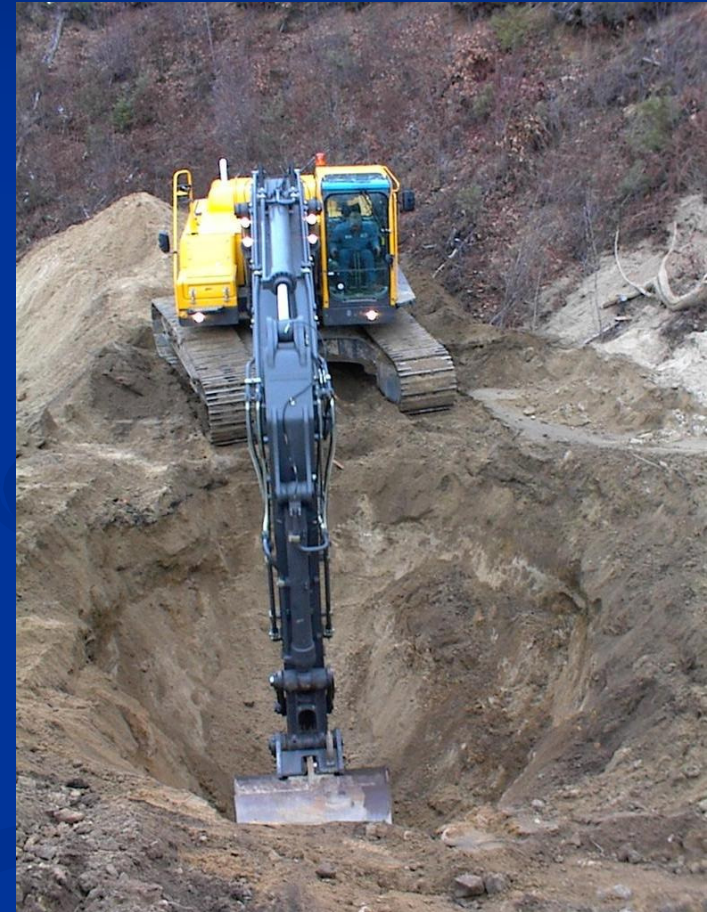




DPW Goals



- Always strive to improve productivity with each project.
- Utilize best available technologies for cost efficiency.
- Open to suggestions to help better serve the community. We don't have all the answers.
- Continue to provide top quality service to residents in a timely manner.

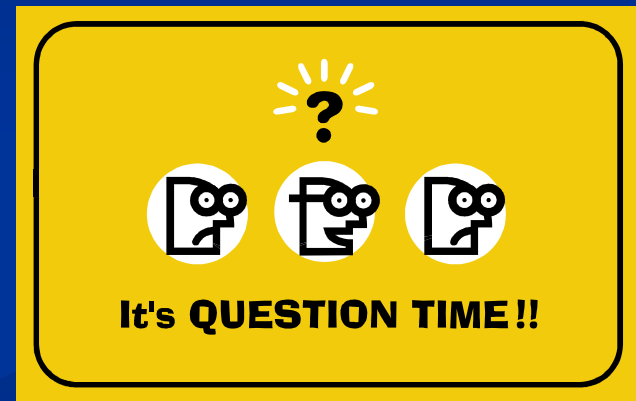


Thank You!

Questions?

Comments?

Suggestions?



Goffstown Department of Public Works

Where To Find Us: 404 Elm Street

How to Reach Us: 497-3617

Website: <http://www.town.goffstown.nh.us/dpw/>